



FHC

Compact commercial cubic unit coolers

Dimensions

Model	n. of fans	Dimensions (mm)		
		A	B	C
F27HC	1	678	412	-
F27HC	2	1048	782	-
F27HC	3	1418	1152	-
F27HC	4	1788	1522	-
F31HC	1	760	492	415
F31HC	2	1210	942	415
F31HC	3	1660	1392	415
F31HC	4	2110	1842	415
F35HC	1	865	597	487
F35HC	2	1420	1152	487
F35HC	3	1975	1707	487
F35HC	4	2530	2262	487

Design pressure

Refrigerant	Max working pressure
HFC*	24 bar
CO ₂	60 bar**
Brine	10 bar

* Fluid group 2 according to EN 378; ** 85 bar in special execution

Each heat exchanger is leak tested with dry air and finally supplied with a dry air pre-charge.

Fitted with schröder valve on the suction connection for testing purposes (only for HFC and CO₂ units).

Options

- Electric defrost.
The stainless steel defrost elements are connected to dedicated terminal box.
- Drip tray heater.
- Fan shroud heater.
- Corrosion protection: pre-coated aluminium fins.
- EC fan motors: single speed for F27, dual speed or 0-10 V control input (0-10) for F31 and F35.
- Drip tray insulation.
- Suction hood.

Selection

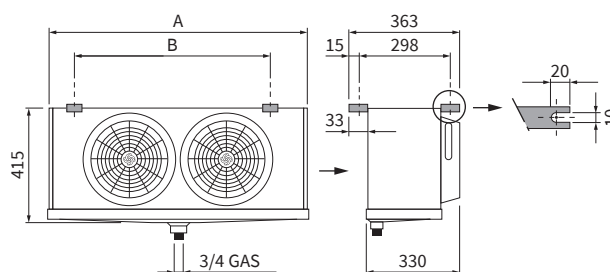
Selection and pricing is to be performed with our air heat exchanger selection software Refriger.

Selection output includes all relevant technical data and dimensional drawings.

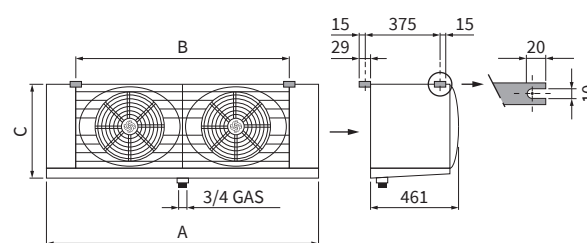
31639104EN-01

LU-VE Exchangers is a trademark registered and owned by LU-VE Group.
LU-VE Exchangers reserves the right to change specifications without prior notification.

F27HC



F31HC - F35HC



Certifications

The LU-VE Exchangers quality system is in accordance with ISO 9001. All products are manufactured according to PED regulations. LU-VE Group participates in the ECP program for HE. Check ongoing validity of certificate*: www.eurovent-certification.com



*Brine refrigerant is not covered by Eurovent certification

Code description

F35	H	C	W	1602	E	4	B
1	2	3	4	5	6	7	8

- 1 F=Future, 27=Ø 275 mm, 31=Ø 315 mm, 35=Ø 350 mm
- 2 H=Hitec®
- 3 C=Cubic
- 4 W=Glycol water
- 5 Model type
- 6 N=Air defrost, E=Electric defrost
- 7 Fin spacing: 4=4.5 mm, 6=6.0 mm, 7=7.0 mm
- 8 Circuit type (only for brine application)

