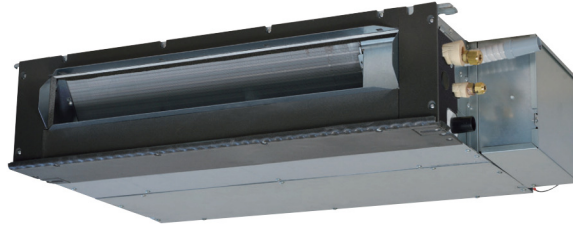




# SINGLE-SPLIT CEILING CONCEALED TYPE

## SRR-ZS

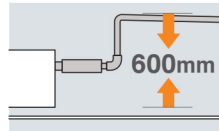


SRR25ZS-W, SRR35ZS-W

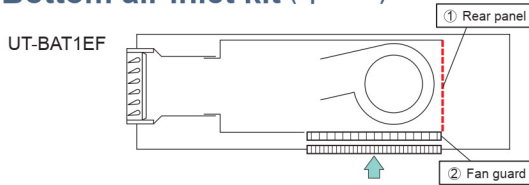


### Enhanced Installation Workability

600mm Drain Pump is mounted in all models. The indoor unit is completely hidden in the ceiling, so this is suitable for spaces with classy interior decoration.



### Bottom air inlet kit (optional)



### KEY FEATURES

- The SRR series' indoor unit is concealed under the ceiling and is perfect for a living room or bedroom area.
- Thin design, the height of SRR models is only 200mm.
- Low Global Warming Potential (GWP) and High energy efficiency by new refrigerant R32.
- Quiet Operation
- Low Static Pressure Level (35Pa)

### SPECIFICATIONS

Indoor unit				SRR25ZS-W	SRR35ZS-W
Outdoor unit				SRC25ZS-W2	SRC35ZS-W2
Power source				1 Phase, 220 - 240V, 50Hz	
Nominal cooling capacity (Min~Max)		kW		2.5 (0.9 ~ 3.2)	3.5 (0.9 ~ 4.1)
Nominal heating capacity (Min~Max)		kW		2.9 (0.9 ~ 4.4)	4.2 (1.0 ~ 5.2)
Power consumption	Cooling/Heating	kW		0.62 / 0.65	0.93 / 1.01
	Cooling/Heating			4.03 / 4.46	3.76 / 4.16
EER/COP					
Max. running current		A		9	9
Sound power level	Indoor	Cooling/Heating	dB(A)	56 / 59	57 / 60
	Outdoor	Cooling/Heating		58 / 58	62 / 62
Sound pressure level	Indoor	Cooling (Hi/Me/Lo/Ulo)		37 / 33 / 30 / 24	38 / 34 / 31 / 25
	Indoor	Heating (Hi/Me/Lo/Ulo)		40 / 37 / 34 / 28	42 / 38 / 35 / 29
Air flow	Outdoor	Cooling/Heating	47 / 47	50 / 50	
	Indoor	Cooling (Hi/Me/Lo/Ulo)	9.5 / 8.0 / 6.5 / 4.5	10.0 / 8.5 / 7.0 / 5.0	
Available external static pressure	Indoor	Cooling (Hi/Me/Lo/Ulo)	10.0 / 9.0 / 8.0 / 6.0	10.5 / 9.5 / 8.5 / 6.5	
	Outdoor	Cooling/Heating	27.4 / 23.6	31.5 / 27.8	
Exterior dimensions		Pa		35(Initial static pressure with air filter : 5Pa)	
Net weight	Indoor	mm		200 x 750 x 500	
	Outdoor	mm		540 x 780(+62) x 290	
Refrigerant	Indoor / Outdoor	kg		20.5 / 31.0	20.5 / 34.5
	Type/GWP			R32 / 675	
Refrigerant piping size	Charge	kg/TCO <sub>2</sub> Eq		0.62 / 0.419	0.78 / 0.527
	Liquid/Gas	ø mm		6.35(1/4") / 9.52(3/8")	
Refrigerant line (one way) length[chargeless length]		m		Max. 20 [15]	
Vertical height differences		m		Max. 10 / Max.10	
Outdoor operating temperature range	Cooling	°CDB		-15~46	
	Heating			-15~24	
Bottom air inlet kit (option)				UT-BAT1EF	

\* The data are measured under the following conditions(ISO-T1, H1). Cooling: Indoor temp. of 27°CDB, 19°CWB, and outdoor temp. of 35°CDB. Heating: Indoor temp. of 20°CDB, and outdoor temp. of 7°CDB, 6°CWB.

\* Sound level indicates the value in an anechoic chamber. During operation these values are somewhat higher due to ambient conditions.

\* 'tonne(s) of CO<sub>2</sub> equivalent' means a quantity of greenhouse gases- expressed as the product of the weight of the greenhouse gases in metric tonnes and of their global warming potential.