

Life Is On



# COLDFACE

Connectable controllers  
and switchboards  
for cold rooms



Download and try  
Eliwell AIR

[eliwell.com/coldface-air](http://eliwell.com/coldface-air)

# COLDFACE

## Connectable controllers and switchboards for cold rooms

Coldface AIR series controllers and switchboards provide control of all static or ventilated cold room functions in a single device, with both single-phase and three-phase loads.

The enclosure, with innovative design for on-board installation, combines ease of installation, water resistance and the capability to house all electromechanical devices required for correct cold room load control and protection, easily accessible in the versions with door on the front panel.

Coldface AIR controllers are available with a series of advanced functions improving the energy efficiency of the application.

A quick and easy set-up is possible by connecting to the controller via Eliwell AIR app\*. This enables an advanced configuration to improve cold room efficiency in a shorter time.

The Coldface range is certified compliant with the EN61439 - EN60204 standards for low-voltage switchgear for installation on machinery.



\*connection via HACCP Module - to be ordered separately

# Plus points



## Easy to install

- Fast wiring thanks to screw or spring-clamp terminal blocks, direct power supply
- Guided wall-mounted application
- Large space inside the enclosure with direct access to the protection circuit breakers



## User friendly

- Intuitive user interface thanks to a large double display
- Direct access to the most used parameters



## Quick start-up and supervision tools

- Fast programming with Eliwell AIR app
- Compatibility with Eliwell TelevisGo supervision system



The large LED display allows constant monitoring of cold room status.



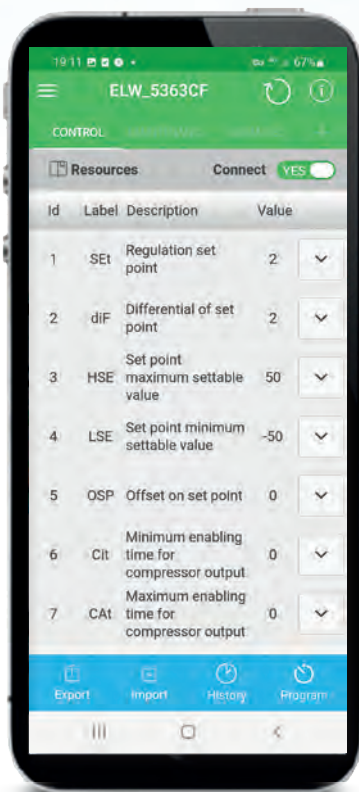
# COLDFACE connectable via Eliwell AIR app to the HACCP Module!

Learn more about the advantages depending on your job

## ARE YOU A REFRIGERATION INSTALLER?

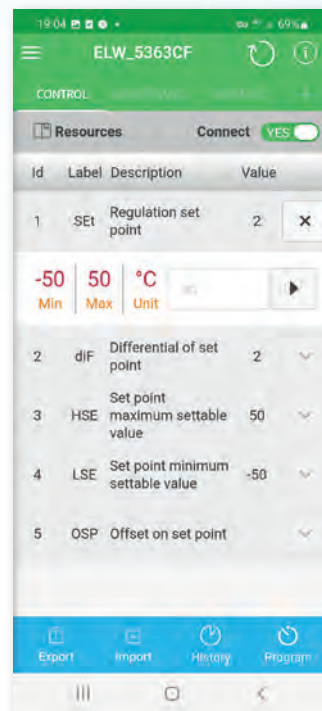
### Easy access

to coldface parameters setting.



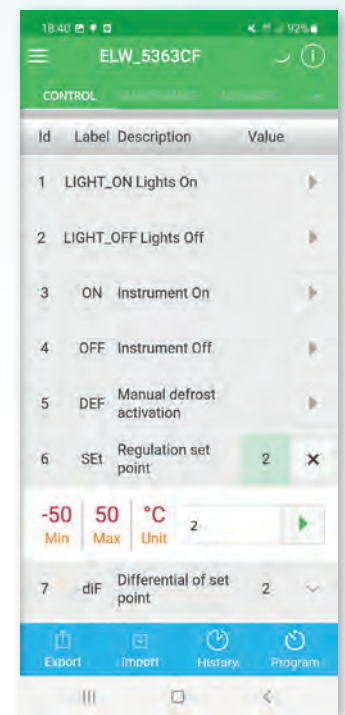
### Easy configuration

each parameter includes the range of values that can be set and its measurement unit.



### Secure programming

thanks to the green button feedback.



## Typical applications


- Butchers
- Dairies
- Delicatessens
- Pasta producers
- Catering
- Wineries
- Hotels
- Cold stores

# ARE YOU THE OWNER OF A SMALL SHOP?

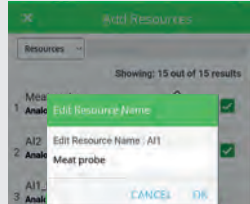
## HACCP Report

Customization step by step


**1** Preferred resources can be selected according to user needs.



**2** Registered resources name can be customized to be recognizable as per shop layout.



**3** Access the resources list with self-explaining labels.

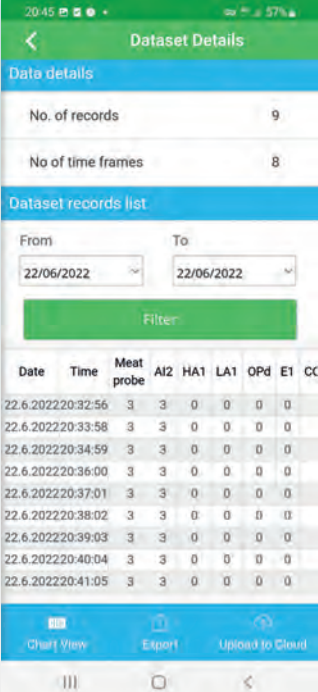


## HACCP data table

Selected data will be shown in a clear layout

HACCP report can be downloaded in **.csv** and **.pdf** format. The file can be shared on social networks or e-mail, sent to a specific device via Bluetooth, or saved in the device's memory.

This procedure can be used to create specific reports including alarm events, in order to share the alarm history to the installer to better organize on-field maintenance.



**Dataset Details**

Data details

- No. of records: 9
- No. of time frames: 8

Dataset records list

From: 22/06/2022 To: 22/06/2022

| Date      | Time     | Meat probe | AI2 | HA1 | LA1 | OPd | E1 | CC |
|-----------|----------|------------|-----|-----|-----|-----|----|----|
| 22.6.2022 | 20:32:56 | 3          | 3   | 0   | 0   | 0   | 0  | 0  |
| 22.6.2022 | 20:33:58 | 3          | 3   | 0   | 0   | 0   | 0  | 0  |
| 22.6.2022 | 20:34:59 | 3          | 3   | 0   | 0   | 0   | 0  | 0  |
| 22.6.2022 | 20:36:00 | 3          | 3   | 0   | 0   | 0   | 0  | 0  |
| 22.6.2022 | 20:37:01 | 3          | 3   | 0   | 0   | 0   | 0  | 0  |
| 22.6.2022 | 20:38:02 | 3          | 3   | 0   | 0   | 0   | 0  | 0  |
| 22.6.2022 | 20:39:03 | 3          | 3   | 0   | 0   | 0   | 0  | 0  |
| 22.6.2022 | 20:40:04 | 3          | 3   | 0   | 0   | 0   | 0  | 0  |
| 22.6.2022 | 20:41:05 | 3          | 3   | 0   | 0   | 0   | 0  | 0  |

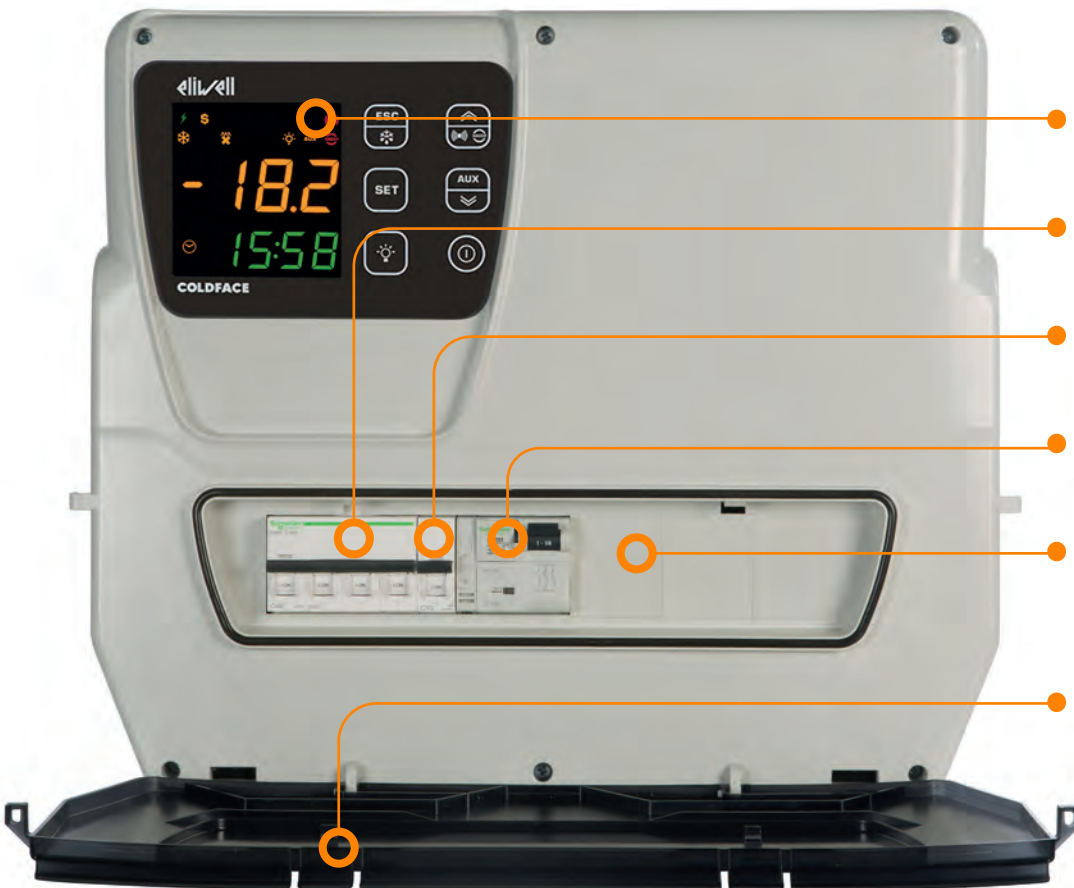
- > Distribution centres
- > Greengrocers
- > Food Trucks





# EWRC 5000 - 5010 - 5030

## Everything under control



- Double display with large digits for excellent visibility
- Magneto-thermal mains switch
- Magneto-thermal switch for auxiliary loads
- Motor protection device with settings up to 20A
- Direct access to switches and protection devices up to 15 DIN modules
- Liquid-resistant front door with padlock fitting

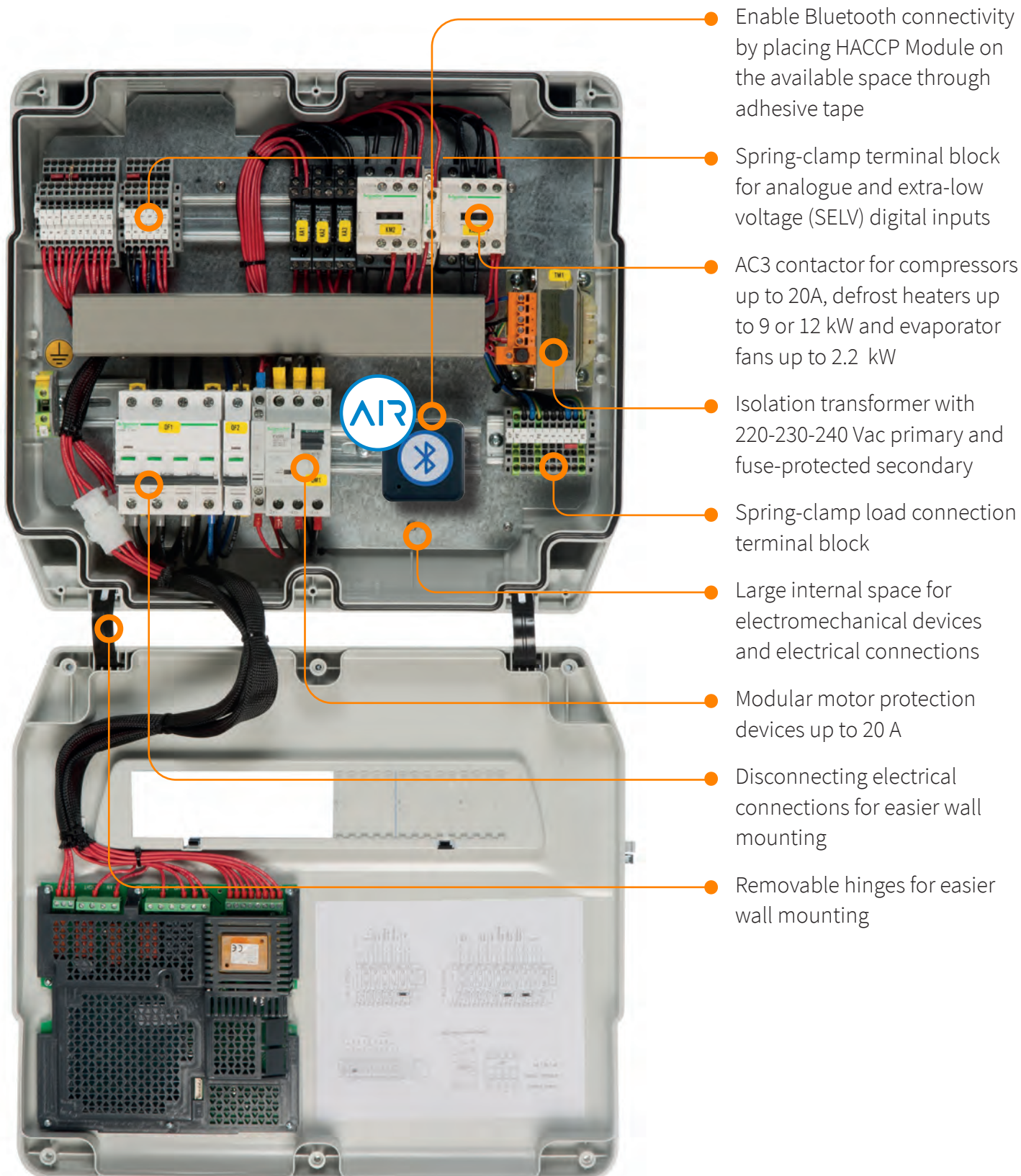


Download and try  
Eliwell AIR

- 1 Download Eliwell AIR app
- 2 Add new device clicking on “+”
- 3 Tap on device name when recognized
- 4 Enter bluetooth password **123456**
- 5 Tap **Resources** and select the ones you want to try!

# EWRC 5000 - 5010 - 5030

## Plenty of wiring space



● Enable Bluetooth connectivity by placing HACCP Module on the available space through adhesive tape

● Spring-clamp terminal block for analogue and extra-low voltage (SELV) digital inputs

● AC3 contactor for compressors up to 20A, defrost heaters up to 9 or 12 kW and evaporator fans up to 2.2 kW

● Isolation transformer with 220-230-240 Vac primary and fuse-protected secondary

● Spring-clamp load connection terminal block

● Large internal space for electromechanical devices and electrical connections

● Modular motor protection devices up to 20 A

● Disconnecting electrical connections for easier wall mounting

● Removable hinges for easier wall mounting

# EWRC 5000 - 5010 - 5030

## General specifications

Line of electrical switchboards for complete control of cold rooms, single-phase or three-phase, with direct compressor control with variable setting protection device, evaporator fan, defrost heater, condenser fan, solenoid valve, cold room light and compressor oil heater.

Front door providing water-splash protection for the interior accommodating up to 15 DIN modules, with direct access to the magneto-thermal switches and variable setting motor protection device.

Thermostat or Pump-Down compressor control.

All connections are on convenient spring-clamp terminal blocks, which combine with efficient enclosure layout for quick, easy electrical connections.

The electronic controller features a series of leading-edge functions, such as HACCP event logging with a yearly calendar.

Connection to Televis or ModBus supervision systems possible with opto-isolated plug-in accessory.

The default configuration covers most applications but offers a high degree of customisation to individual requirements by the installer.

Quick and easy set-up is possible by connecting to the controller via Eliwell AIR app\*. This enables an advanced configuration to improve cold room efficiency in a shorter time.

The product is certified compliant with the European directives regulating low-voltage switchgear for installation on machinery (EN61439 - EN60204).



**Download and try  
Eliwell AIR**

- 1 Download Eliwell AIR app
- 2 Add new device clicking on “+”
- 3 Tap on device name when recognized
- 4 Enter bluetooth password **123456**
- 5 Tap **Resources** and select the ones you want to try!

\*HACCP Module to be ordered separately.



# EWRC 5000 - 5010 - 5030

## Technical data



|                              | EWRC 5000 NT  | EWRC 5010 NT                       | EWRC 5030 NT                        |
|------------------------------|---|------------------------------------|-------------------------------------|
| <b>Dimensions</b>            | 450x380x160 mm  |                                    |                                     |
| <b>Enclosure</b>             | PC + ABS  |                                    |                                     |
| <b>Enclosure rating</b>      | IP65  |                                    |                                     |
| <b>Installation</b>          | Wall  |                                    |                                     |
| <b>Display</b>               | 3 digits + sign and 4 digits  |                                    |                                     |
| <b>Display range</b>         | NTC: -50...110 °C / PTC: -55...150 °C   |                                    |                                     |
| <b>Resolution</b>            | 0.1 °C  |                                    |                                     |
| <b>Analogue inputs</b>       | 3 x NTC / PTC*  |                                    |                                     |
| <b>Digital inputs</b>        | 2 voltage-free inputs   |                                    |                                     |
| <b>Control type</b>          | Single-phase  |                                    | Three-phase                         |
| <b>Connections</b>           | Screw terminals   | Screw terminals on DIN rail        |                                     |
| <b>Auxiliary protection</b>  | -   | Specific magneto-thermal switch    |                                     |
| <b>RTC</b>                   | Present   |                                    |                                     |
| <b>HACCP</b>                 | Present   |                                    |                                     |
| <b>Connectivity</b>          | TTL serial port for HACCP Module and Unicard; RS485** port for Televis supervision system and Modbus RTU systems. |                                    |                                     |
| <b>Power supply</b>          | 230 Vac +/-10 % 50/60 Hz  | 230 Vac (phase + neutral + ground) | 400 Vac (3phase + neutral + ground) |
| <b>Mains switch</b>          | -   | Two-pole magneto-thermal switch    | Four-pole magneto-thermal switch    |
| <b>Operating temperature</b> | -5...35 °C (Max 40 °C non continuous)   |                                    |                                     |
| <b>Operating humidity</b>    | 10...90 % RH (non condensing)   |                                    |                                     |

\* configurable by user - \*\* with optional plug-in accessory

## Table of codes

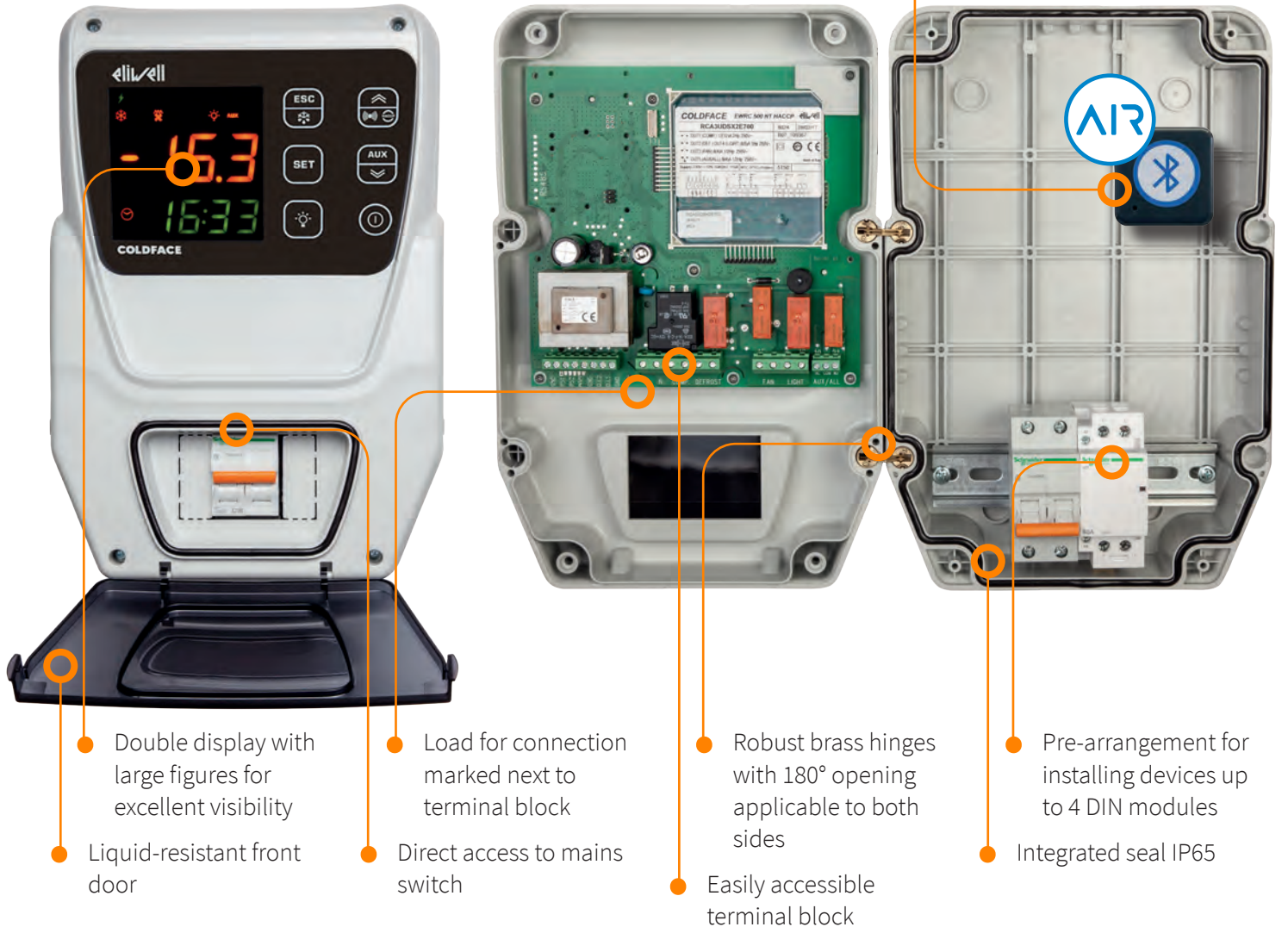
| Code                  | Description                             | Notes   |
|-----------------------|---|---|
| <b>RCNH300DTX*700</b> | EWRC 5000 NT HACCP BZ AIR               | Electronic Controller only  |
| <b>RCNH301DTX*700</b> | EWRC 5010 NT HACCP BZ 2.5-4A 230Vac AIR | HACCP/Buzzer/RTC/AIR  |
| <b>RCNH302DTX*700</b> | EWRC 5010 NT HACCP BZ 4-6.3A 230Vac AIR | HACCP/Buzzer/RTC/AIR  |
| <b>RCNH303DTX*700</b> | EWRC 5010 NT HACCP BZ 6-10A 230Vac AIR  | HACCP/Buzzer/RTC/AIR  |
| <b>RCNH304DTX*700</b> | EWRC 5010 NT HACCP BZ 13-18A 230Vac AIR | HACCP/Buzzer/RTC/AIR  |
| <b>RCNH305DTX*900</b> | EWRC 5030 NT HACCP BZ 2.5-4A 400Vac AIR | HACCP/Buzzer/RTC/AIR  |
| <b>RCNH306DTX*900</b> | EWRC 5030 NT HACCP BZ 4-6.3A 400Vac AIR | HACCP/Buzzer/RTC/AIR  |
| <b>RCNH307DTX*900</b> | EWRC 5030 NT HACCP BZ 6-10A 400Vac AIR  | HACCP/Buzzer/RTC/AIR  |
| <b>RCNH308DTX*900</b> | EWRC 5030 NT HACCP BZ 9-14A 400Vac AIR  | HACCP/Buzzer/RTC/AIR  |
| <b>RCNH309DTX*900</b> | EWRC 5030 NT HACCP BZ 13-18A 400Vac AIR | HACCP/Buzzer/RTC/AIR  |
| <b>RCNH310DTX*900</b> | EWRC 5030 NT HACCP BZ 17-20A 400Vac AIR | HACCP/Buzzer/RTC/AIR  |
| <b>RCNH311DTX*900</b> | EWRC 5030 NT HACCP BZ 6kW AIR           | HACCP/Buzzer/RTC/AIR/Evaporator with 6 kW electric defrost system |
| <b>RCNH312DTX*900</b> | EWRC 5030 NT HACCP BZ 12kW AIR          | HACCP/Buzzer/RTC/AIR/Evaporator with 12kW electric defrost system |

\*The number in this position indicates the language available for the code: 1: ITA-ENG 2: ENG-AR 3: ITA-SPA 4: FRA-GER 5: GRE-RUS



# EWRC 300 NT - EWRC 500 NT

## General specifications



Download and try  
Eliwell AIR

- 1 Download Eliwell AIR app
- 2 Add new device clicking on “+”
- 3 Tap on device name when recognized
- 4 Enter bluetooth password **123456**
- 5 Tap **Resources** and select the ones you want to try!

Line of electronic controllers for single-phase cold rooms, with direct control of compressors up to 2 HP, evaporator fan, defrost heater, cold room light and alarm.

Front door providing water-splash protection for the interior accommodating up to 4 DIN modules, with direct access to the magneto-thermal mains switch.

Connection to Televis or ModBus supervision systems possible with opto-isolated plug-in accessory.

The product is certified compliant with the European directives regulating low-voltage switchgear for installation on machinery (EN61439 - EN60204).

# EWRC 300 NT - EWRC 500 NT

## Technical data



|  | EWRC 300 NT   | EWRC 500 NT              | EWRC 500 NT BREAKER |
|--|---|--------------------------|---------------------|
| <b>Dimensions</b>                          | 213x318x102 mm  |                          | 221x318x107 mm      |
| <b>Enclosure</b>                           | PC + ABS  |                          |                     |
| <b>Enclosure rating</b>                    | IP65  |                          |                     |
| <b>Installation</b>                        | Wall  |                          |                     |
| <b>Display</b>                             | 3 digits + sign and 4 digits  |                          |                     |
| <b>Display range</b>                       | NTC: -50...110 °C / PTC: -55...150 °C   |                          |                     |
| <b>Resolution</b>                          | 0.1 °C  |                          |                     |
| <b>Analogue inputs</b>                     | 3(2) x NTC / PTC*   |                          |                     |
| <b>Digital inputs</b>                      | 2(3) voltage-free   |                          |                     |
| <b>Digital outputs</b> (default config. *) | 12(12) A 2 HP 250 Vac SPST  |                          |                     |
| Compressor                                 |   |                          |                     |
| Defrost                                    | 8(8) A 1 HP 250 Vac SPST  |                          |                     |
| Evaporator fan                             | 8(4) A ½ HP 250 Vac SPST  |                          |                     |
| Light                                      | -   | 8(8) A 1 HP 250 Vac SPST |                     |
| Alarm                                      | -   | 8(4) A ½ HP 250 Vac SPST |                     |
| <b>Connections</b>                         | Screw-type  |                          |                     |
| <b>RTC Clock</b>                           | Optional  |                          |                     |
| <b>HACCP</b>                               | Optional  |                          |                     |
| <b>Connectivity</b>                        | TTL serial port for HACCP Module and Unicard; RS485** port for Televis supervision system and Modbus RTU systems. |                          |                     |
| <b>Power supply</b>                        | 230 Vac / 11 VA   |                          |                     |
| <b>Interruttore</b>                        | -   | 230 Vac Icn 4500 A 2P    |                     |
| <b>Nominal current</b>                     | -   | In = 16 A                |                     |
| <b>Pulse voltage</b>                       | -   | 4 KV                     |                     |
| <b>Operating temperature</b>               | -5...+50 °C   |                          |                     |
| <b>Operating humidity</b>                  | 10...90 % RH (non condensing)   |                          |                     |

\* configurable by user

## Table of codes

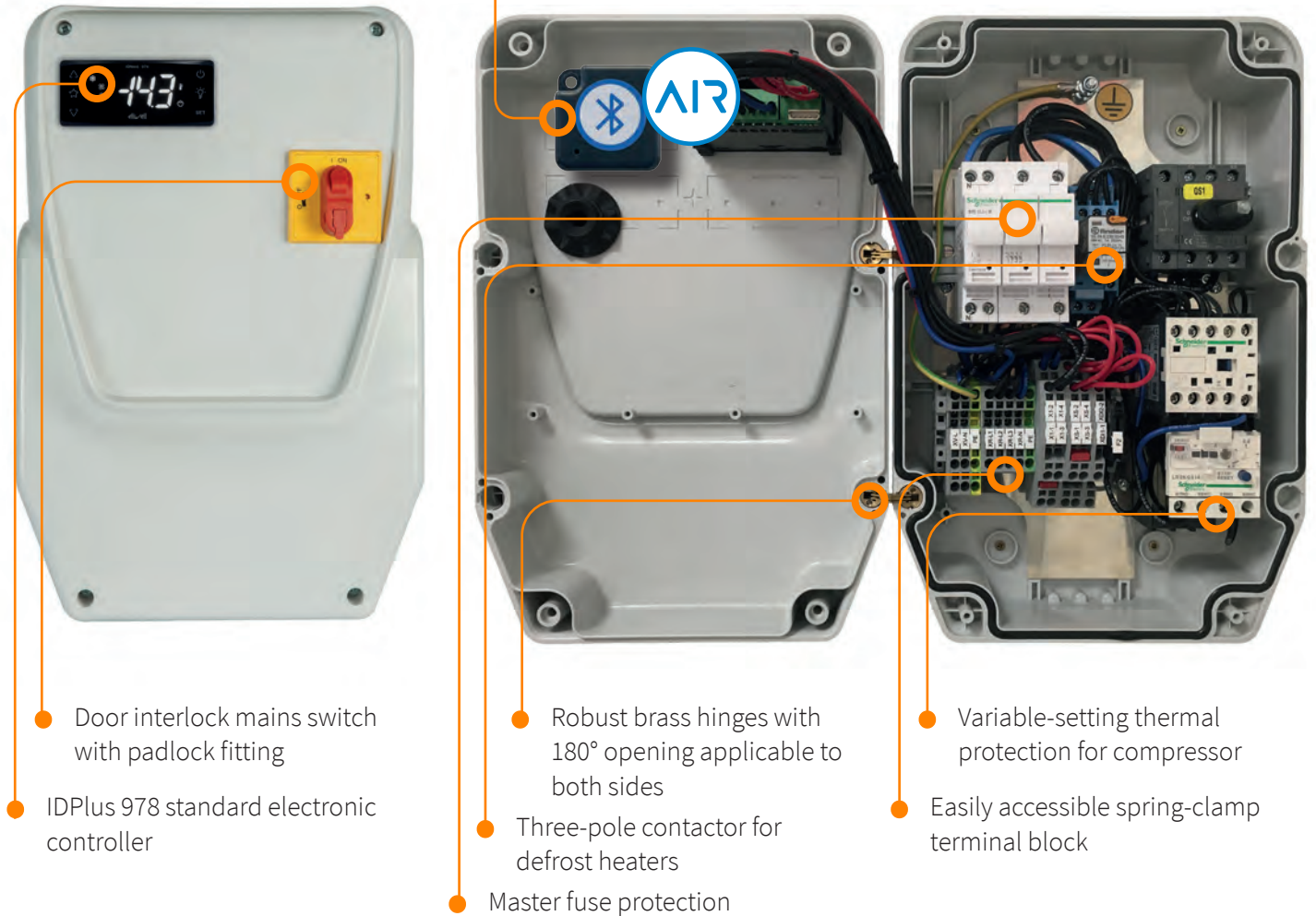
| Code                  | Description                              | Notes  |
|-----------------------|--|--|
| <b>RCNS3HDLX2*700</b> | EWRC 300 NT 2HP BUZZER AIR               | Buzzer/AIR   |
| <b>RCNS3UDLX2*700</b> | EWRC 500 NT 2HP BUZZER AIR               | Buzzer/AIR   |
| <b>RCNS3UDTX2*700</b> | EWRC 500 NT 2HP RTC HACCP BUZ AIR        | HACCP/BUZZER/RTC/AIR                               |
| <b>RCNA3UDLX2*700</b> | EWRC 500 NT 2HP BUZZER 4DIN AIR          | Buzzer/DIN rail/AIR                                |
| <b>RCNA3UDTX2*700</b> | EWRC 500 NT 2HP RTC HACCP BUZ 4DIN AIR   | HACCP/BUZZER/RTC/DIN RAIL/AIR                      |
| <b>RCNA3UDRX2*700</b> | EWRC 500 NT 2HP BUZ 4D W\B AIR           | Buzzer/DIN rail with Circuit Breaker/AIR           |
| <b>RCNA3UDSX2*700</b> | EWRC 500 NT 2HP RTC HACCP BUZ 4D W\B AIR | HACCP/Buzzer/RTC/DIN rail with Circuit Breaker/AIR |
| <b>KP00Q1S0</b>       | RS485 Plugin 40x49mm screw terminals     | Optional module                                    |

\* The number or letter in this position indicates the language available for the code:  
 0: ITA; E: ENG; F: FRA; G: GER; O: POL; R: RUS; S: SPA; T: TUR; U: Arabic; W: SWE; Z: BRA



# IDNext Panel 978

## General specifications



Enable Bluetooth connectivity by placing HACCP Module on the available space through adhesive tape

Door interlock mains switch with padlock fitting

IDPlus 978 standard electronic controller

Robust brass hinges with 180° opening applicable to both sides

Three-pole contactor for defrost heaters

Master fuse protection

Variable-setting thermal protection for compressor

Easily accessible spring-clamp terminal block



Download and try  
Eliwell AIR

Line of electrical switchboards for complete control of cold rooms, single-phase or three-phase, with direct control of compressor with variable-setting thermal protection, evaporator fan, defrost heater and cold room light. The use of the widely adopted, well known IDPlus 978 standard controller ensures extremely simple commissioning and use.

All connections are on convenient spring-clamp terminal blocks, which combine with efficient enclosure layout for quick, easy electrical connections.

The electronic controller can be connected to Televis or ModBus supervision systems by means of the BusAdapter external accessory.

The product is certified compliant with the European directives regulating low-voltage switchgear for installation on machinery (EN61439 - EN60204).

# IDNext Panel 978

## Technical data



|                                    | IDPanel 978 5.5-8A<br>230 Vac   | IDPanel 978 8-11A 230<br>Vac | IDPanel 978 3.7-5.5A<br>400 Vac     | IDPanel 978 5.5-6 A<br>400 Vac |
|------------------------------------|---|------------------------------|-------------------------------------|--------------------------------|
| <b>Dimensions</b>                  | 213x318x102 mm  |                              |                                     |                                |
| <b>Enclosure</b>                   | PC + ABS  |                              |                                     |                                |
| <b>Installation</b>                | Wall  |                              |                                     |                                |
| <b>Display</b>                     | 3Digits + sign  |                              |                                     |                                |
| <b>Display range</b>               | NTC: -50...110 °C / PTC: -55...140 °C / Pt1000: -55...150 °C                                |                              |                                     |                                |
| <b>Resolution</b>                  | 0.1 °C  |                              |                                     |                                |
| <b>Analogue inputs</b>             | 2 PTC / NTC / Pt1000*   |                              |                                     |                                |
| <b>Digital inputs</b>              | 1 digital (SELV) / analogue (PTC / NTC / Pt1000) / 1 digital (SELV) / serial TTL*           |                              |                                     |                                |
| <b>Control type</b>                | Single-phase  |                              | Three-phase                         |                                |
| <b>Compressor</b>                  | 1PH 5.5 - 8.0 A   | 1PH 8.0 -11.0 A              | 3PH 3.7 - 5.5 A                     | 3PH 5.5 - 6.0 A                |
| <b>Defrost</b>                     | 1PH 800 W   |                              | 3PH 2400 W                          |                                |
| <b>Evaporator fan</b>              | 1PH 800 W   |                              |                                     |                                |
| <b>Light</b>                       | 1PH 800 W   |                              |                                     |                                |
| <b>Connections</b>                 | Screw terminals on DIN bar  |                              |                                     |                                |
| <b>Connectivity</b>                | TTL port for connection to HACCP Module, Unicard or TelevisSystem/ModBus monitoring device* |                              |                                     |                                |
| <b>Power supply</b>                | 230 Vac (phase + neutral + ground)  |                              | 400 Vac (3phase + neutral + ground) |                                |
| <b>Door interlock mains switch</b> | 25 A  |                              |                                     |                                |
| <b>Operating temperature</b>       | -5...+40 °C   |                              |                                     |                                |
| <b>Operating humidity</b>          | 10...90 % RH (non condensing)   |                              |                                     |                                |
| <b>General protection</b>          | Fuses   |                              |                                     |                                |
| <b>Motor protection</b>            | Thermal relay   |                              |                                     |                                |

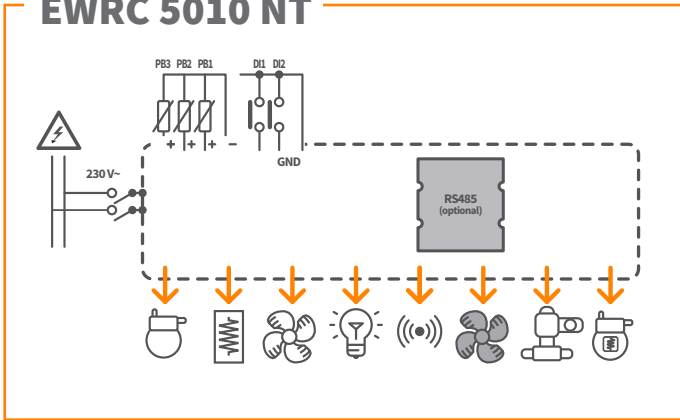
\* configurable by user

## Table of codes

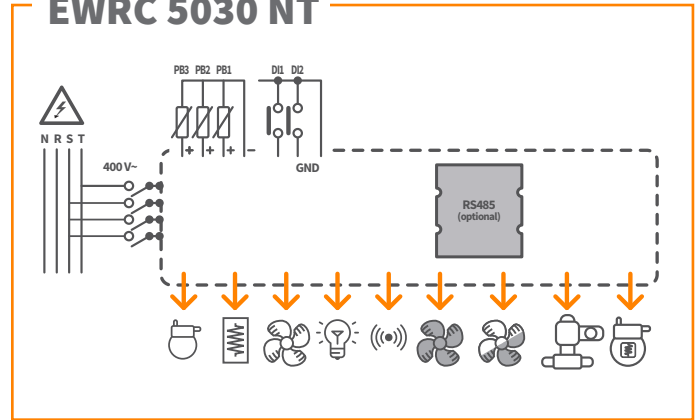
| Code           | Description                              | Notes        |
|----------------|--|--------------|
| ELNP300DSX0700 | IDNext Panel 978 5.5-8A 230Vac AIR       | HACCP/Buzzer |
| ELNP301DSX0700 | IDNext Panel 978 8-11A 230Vac AIR        | HACCP/Buzzer |
| ELNP302DSX0900 | IDNext Panel 978 3.7-5.5A 400Vac AIR     | HACCP/Buzzer |
| ELNP303DSX0900 | IDNext Panel 978 5.5-6A 400Vac AIR       | HACCP/Buzzer |
| ELNP303DSXU900 | IDNext Panel 978 AR/EN 5.5-6A 400Vac AIR | HACCP/Buzzer |

# Functional diagrams

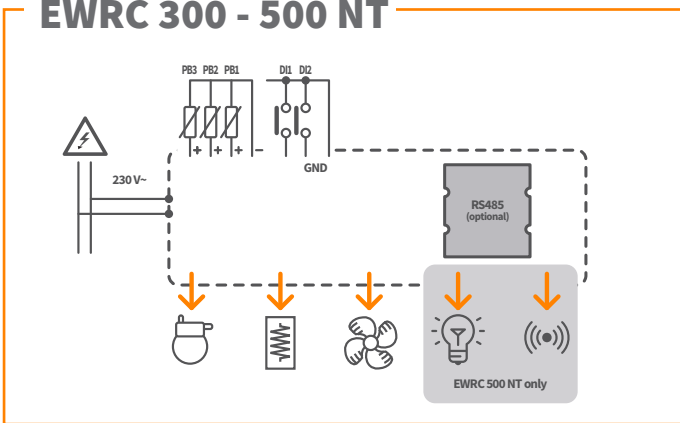
## EWRC 5010 NT



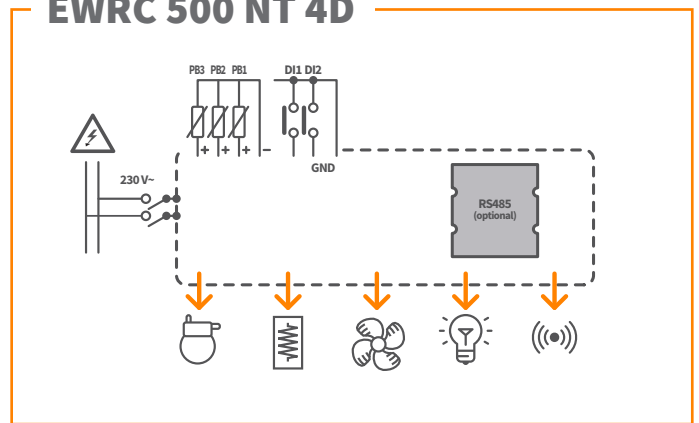
## EWRC 5030 NT



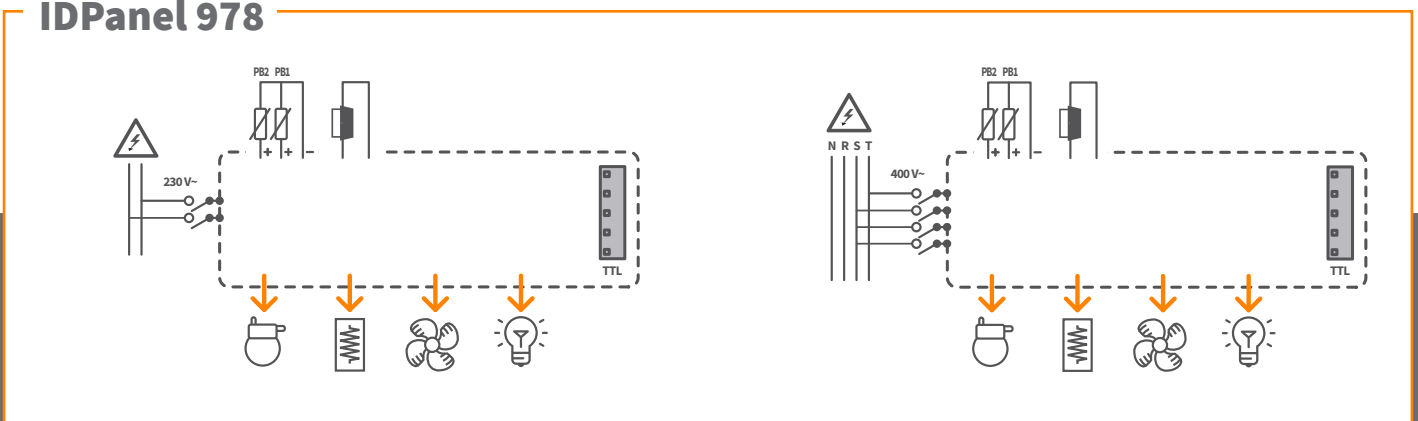
## EWRC 300 - 500 NT



## EWRC 500 NT 4D

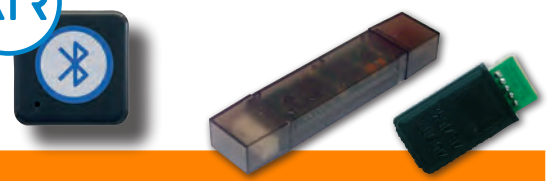


## IDPanel 978





# Accessories



## Interfaces, programming keys

| Code                  | Description  |
|-----------------------|--|
| <b>ADBT50005110H0</b> | HACCP Module   |
| <b>CC0S00A00M000</b>  | Copy Card   Programming key for loading/downloading parameters |
| <b>CCA0BHT00UU00</b>  | UNICARD USB/TTL  |

## Temperature probes



| Code                 | Description   |
|----------------------|---|
| <b>SN691150</b>      | 1.5m thermoplastic rubber cable NTC IP68 and 5X20mm thermoplastic tip |
| <b>SN8DED11502C0</b> | 1.5m thermoplastic rubber cable NTC IP68 and 5X20mm thermoplastic tip |
| <b>SN8DAE11502C0</b> | 1.5m thermoplastic rubber cable NTC IP68 and 6X20mm Steel tip         |
| <b>SN8DED13002C0</b> | 3m thermoplastic rubber cable NTC IP68 and 6X20mm Steel tip           |
| <b>SN8DAE13002C0</b> | 3m thermoplastic rubber cable NTC IP68 and 6X20mm Steel tip           |

## RS485 plug-in (for EWRC 300 - 500 - 5010 - 5030 NT)



| Code            | Description                           |
|-----------------|---------------------------------------|
| <b>KP00Q150</b> | RS485 Plug-in 40x49mm screw terminals |

## Other accessories (for EWRC 300 - 500 and IDPanel 978)

| Code            | Description               |
|-----------------|---------------------------|
| <b>ZZ000292</b> | Plug cover TDI 20 (12pcs) |
| <b>ZZ000291</b> | Brass hinge (12 pcs)      |



# Eliwell Digital Experience

## INNOVATION HUB



ACCESS HERE



Experience digitization through a showroom that replicates real-world scenarios. Re-imagine the Food Retail business with solutions from Eliwell and Schneider Electric.

# DIGITAL ACADEMY



ACCESS HERE

Your digital space to find out, choose and make the most effective use of Eliwell's products and solutions. Just a click to increase your competencies and your business.



REGISTER NOW



# UPDATE CENTER

The easiest way to know what's new in the Eliwell world: documentation, software, available training resources and real application. Set your preferences and stay always up to date!









Life Is On



**ITALY - HEADQUARTERS**

**Eliwell Controls Srl**

Via dell' Industria, 15 Z. I. Paludi

32016 Alpago (BL) - Italy

T +39 0437 986 111

**Sales**

T +39 0437 986 100 (Italy)

T +39 0437 986 200 (other countries)

E saleseliwell@schneider-electric.com

**Technical support**

T +39 0437 986 300

E techsuppeliwell@schneider-electric.com



**Contact us!**

Learn  
more about  
Coldface



**www.eliwell.com**

Follow us on  

CT123386 • rel. 06/22  
© 2022 Eliwell - Tutti i diritti riservati.

Since 1980, Eliwell has been developing and manufacturing control systems, solutions and services for both commercial and industrial refrigeration units. It embodies the success story of an Italian company that has brought Made in Italy technological developments to the world for over 40 years. In 2014, it became part of the Schneider Electric group and remains its centre of excellence for HVACR applications. Together with Schneider Electric, Eliwell is now the global partner providing efficient and sustainable solutions and services for food storage and distribution systems, and for integrated resource control of environmental comfort installations.